

BRRF40A USER'S MANUAL

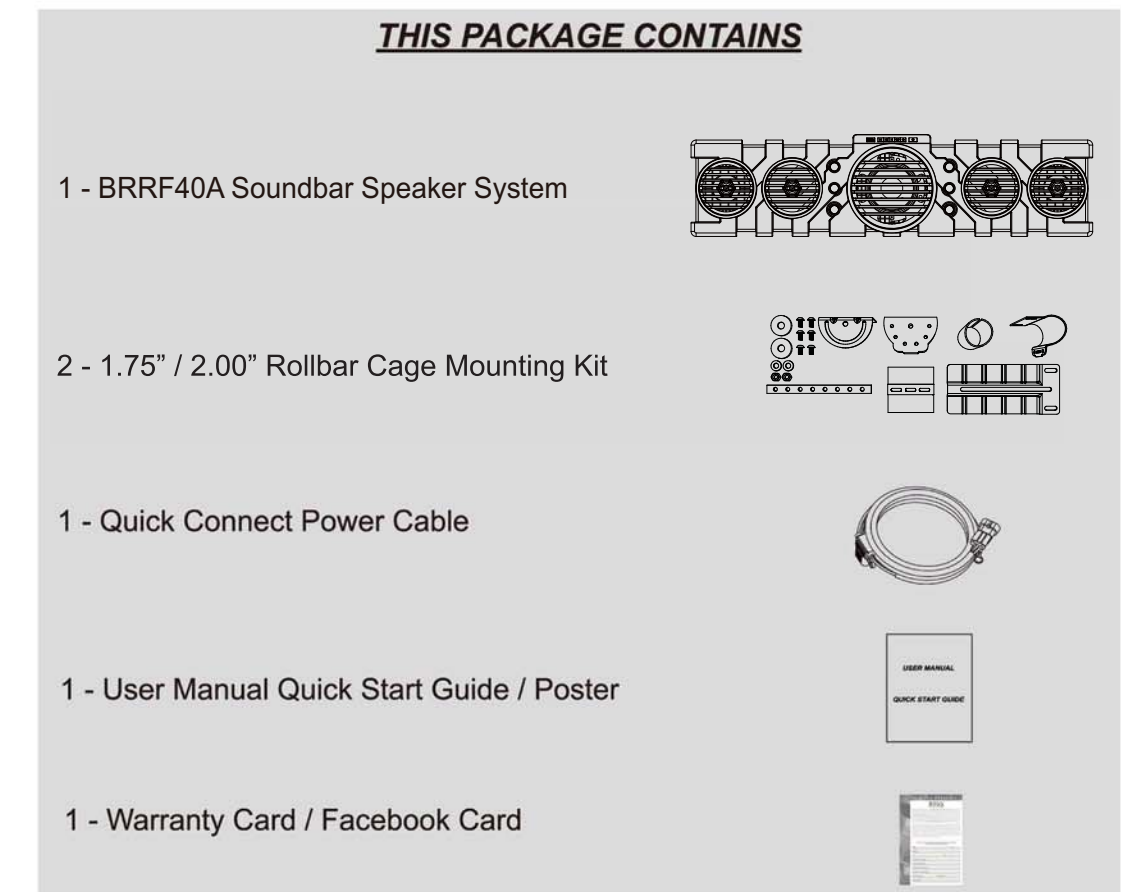
40" SIDE x SIDE | AMPLIFIED OVERHEAD SYSTEM

FEATURES **BLUETOOTH®**, AND BUILT-IN CLASS D AMPLIFIER AND DOME LIGHTS



1 Thank you for purchasing this BOSS AUDIO SYSTEMS BRRF40A Soundbar Sound System

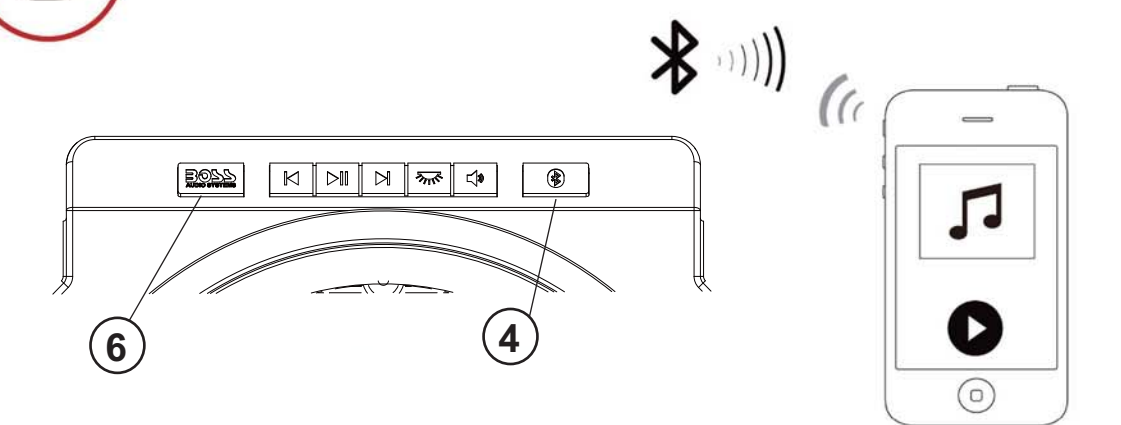
Please read through these instructions carefully so you will know how to operate your model properly. After you have finished reading the instructions, keep this document in a safe place for future reference.



INFORMATION TO THE USER

Bluetooth
The Bluetooth® word mark and logos are registered trademarks owned by Bluetooth SIG, Inc. and any use of such marks is under license. Other trademarks and trade names are those of their respective owners.

5 BLUETOOTH OPERATION



PAIRING & DISCOVERING A NEW BLUETOOTH CONNECTION

- 1) Power on the **BRRF40A** by short-pressing the **6** **Power button**, long-press the **4** **Bluetooth** button for 3 seconds, the **BLUE LED** will start to rapidly flash, signaling that the **UNIT** is now ready for **Bluetooth** pairing

NOTE: You have 2 minutes before you must restart this procedure over again.

- 2) The **BRRF40A** is now in pairing mode:

ANDROID users:

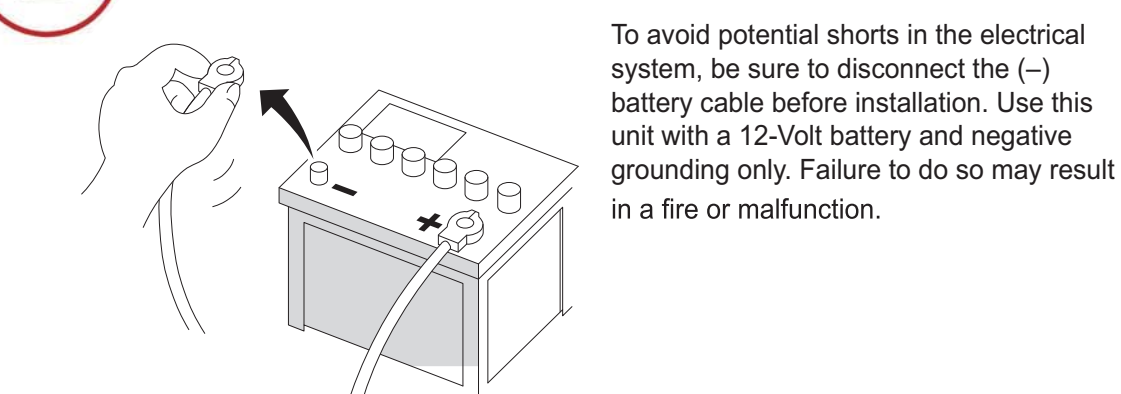
- a. Go into the **Settings Menu** of your device
- b. Enter the **Bluetooth Menu**
- c. **TURN ON Bluetooth** and press **SCAN**
- d. "Boss audio BRRF40A" will now be displayed under **AVAILABLE DEVICES**
- e. If prompted, enter passcode: "0000"

IOS users:

- a. Go into the **Settings Menu** of your **IOS** device
- b. Enter the **Bluetooth Menu**
- c. **TURN ON Bluetooth**
- d. "Boss audio BRRF40A" will now be displayed
- e. If prompted, enter passcode: "0000"

- 3) If **Boss audio BRRF40A** is not seen, repeat the above steps to refresh the "Device List"
- 4) When the connection is successful a tone will be heard, and the **Bluetooth** LED indicator will light solid, you are now ready to stream music from your favorite media player to the **UNIT**

9 BEFORE YOU START INSTALLATION



When replacing the fuse, be sure to only use a fuse of the rating specified on this product. To avoid short-circuiting, cover any disconnected leads with insulating tape. It is especially important to insulate any unused wires, which if left uncovered may cause a short circuit. When connecting other devices to this product, refer to the manual for the product to be connected. The black cable is ground, make sure to connect the ground wire first. Ensure that the ground wire is properly connected to metal parts of the vehicles body frame or direct to the battery if your vehicle does not have a grounded chassis frame. The ground wire of this units power amp and a second powered system must be connected to the frame separately with different screws. If the screw for the ground wire loosens or falls out, it could result in fire or malfunction.

NOTE!!
To conserve battery life, the LED Dome Light will automatically turn off after 10 minutes when **BRRF40A** ACC is turned OFF

2 INFORMATION TO THE USER

FCC COMPLIANCE STATEMENT

This device complies with part 15 of the FCC Rules. Operation is subject to the following two conditions:

- (1) this device may not cause interference, and
- (2) this device must accept any interference, including interference that may cause undesired operation of this device.

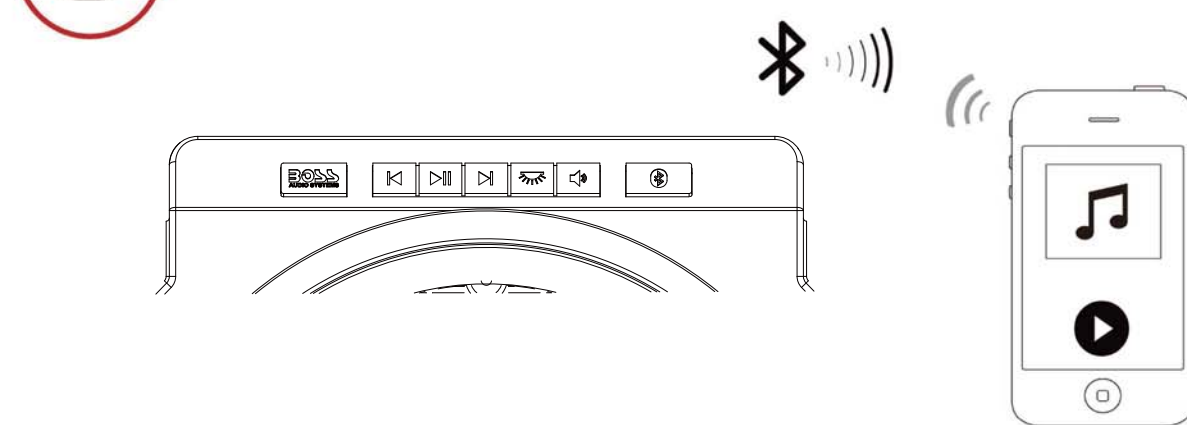
This transmitter must not be co-located or operated in conjunction with any other antenna or transmitter. The Bluetooth antenna cannot be removed (or replaced) by user. This equipment complies with FCC/ IC radiation exposure limits set forth for an uncontrolled environment and meets the FCC radio frequency (RF) Exposure Guidelines and RSS-102 of the IC radio frequency (RF) Exposure rules. This equipment has very low levels of RF energy that is deemed to comply without maximum permissive exposure (MPE) evaluation. But it is desirable that it should be installed and operated keeping the radiator at least 20 cm or more away from person's body (excluding extremities: hands, wrists, feet and ankles). Alteration or modifications carried out without appropriate authorization may invalidate the user's right to operate the equipment.

NOTE: This equipment has been tested and found to comply with the limits for a Class B digital device, pursuant to Part 15 of the FCC Rules. These limits are designed to provide reasonable protection against harmful interference in a residential installation. This equipment generates, uses and can radiate radio frequency energy and, if not installed and used in accordance with the instructions, may cause harmful interference to radio communications. However, there is no guarantee that interference will not occur in a particular installation. If this equipment does cause harmful interference to radio or television reception, which can be determined by turning the equipment off and on, the user is encouraged to try to correct the interference by one or more of the following measures:

- Relocate or reorient the receiving antenna.
- Increase the separation between the equipment and receiver.
- Connect the equipment into an outlet on a circuit different from that to which the receiver is connected.
- Consult the dealer or an experienced radio/TV technician for help.

CAUTION!!
ADJUSTMENT OR ALTERATIONS OF THIS DEVICE MAY RESULT IN HAZARDOUS RADIATION EXPOSURE.

6 BLUETOOTH OPERATION



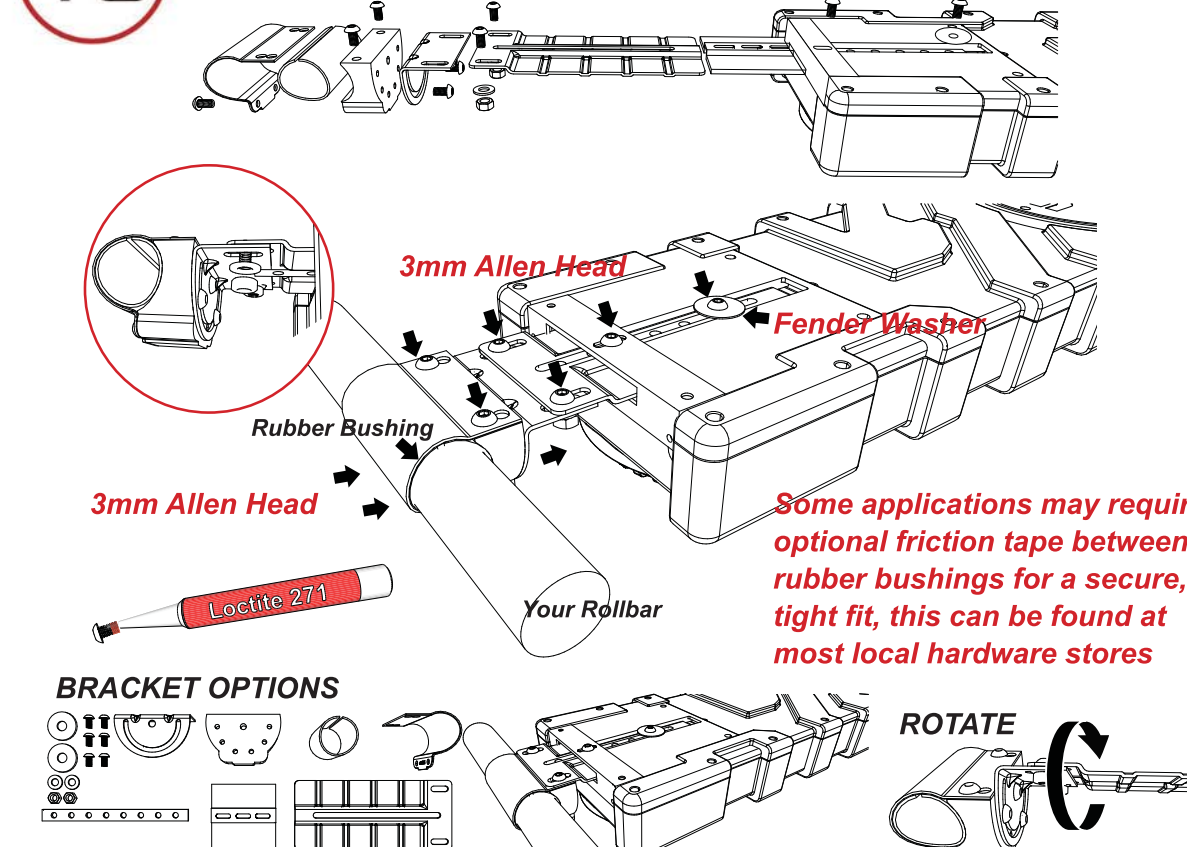
RECONNECTION

- 1) Power on the **BRRF40A** and your last paired Bluetooth device.
- 2) Ensure you are within range of the **UNIT**, the unit will now automatically reconnect
- 3) If the device is out of range from the **UNIT**, it will disconnect automatically:
 - a. The **UNIT** will reconnect automatically to your device when in range
- 4) If your device was previously paired with the **UNIT**
 - a. Ensure no other devices are currently paired
 - b. Enter the **Bluetooth Menu** on your device being paired
 - c. "Boss audio BRRF40A" will display under **AVAILABLE DEVICES**
 - d. Choose the "Boss audio BRRF40A" to reconnect
- 5) To clear all previously paired devices from memory, press and hold the **Bluetooth** button for 10 seconds

NOTE: Some devices may require a manual **Bluetooth** reconnection once the **Bluetooth** devices are powered **OFF / ON** and/or back in range, repress the "Boss audio BRRF40A" button in BLUETOOTH settings on your device

Tips: Using this product without running the engine can drain the battery. To avoid battery exhaustion, be sure to occasionally run the vehicles engine while using this product.

10 MOUNTING THE SOUNDBAR



- 1) Determine the best location on your **rollbar** for your vehicle, install rubber **bushings** on the **rollbar**, ensure there is ample head space
- 2) Apply supplied **Loc-Tight** to **allen bolt** tips, let dry for 20 minutes
- 3) Wrap C-clamp around rollbar, hand tighten the allen-head bolts
- 4) Insert left/right slide rails into **REFLEX Soundbar**, some vehicles will require the use of the rotation bracket, allowing adjustments up to +/- 10 degrees
- 5) Carefully set the **REFLEX Soundbar** on top of the C-clamp, hand tighten the allen head screws
- 6) Center the **REFLEX Soundbar**, permanently tighten all the **allen bolts** and **nuts**

CAUTION!!
Mounting brackets should be periodically checked to be sure they are tight and secure before use of the vehicle.

3 BEFORE YOU START

IMPORTANT SAFETY PRECAUTIONS

- Do not operate mobile equipment while driving a motorized vehicle – safe driving and safety consideration of others should always be your highest priority
- In the event you should notice smoke, strange noises or odor from this product, or any other abnormal signs, immediately turn off the power and consult your dealer or the nearest authorized **BOSS AUDIO SYSTEMS** Service Center Using this product in this condition may result in permanent damage to the system
- Set your volume control at a low setting, then slowly increase the sound until you can hear it comfortably without distortion, or ear discomfort
- BE SURE TO OBSERVE THE FOLLOWING GUIDELINES:**
 - Do not turn up the volume so high that you can't hear what's around you
 - Use caution or temporarily discontinue use in potentially hazardous situations

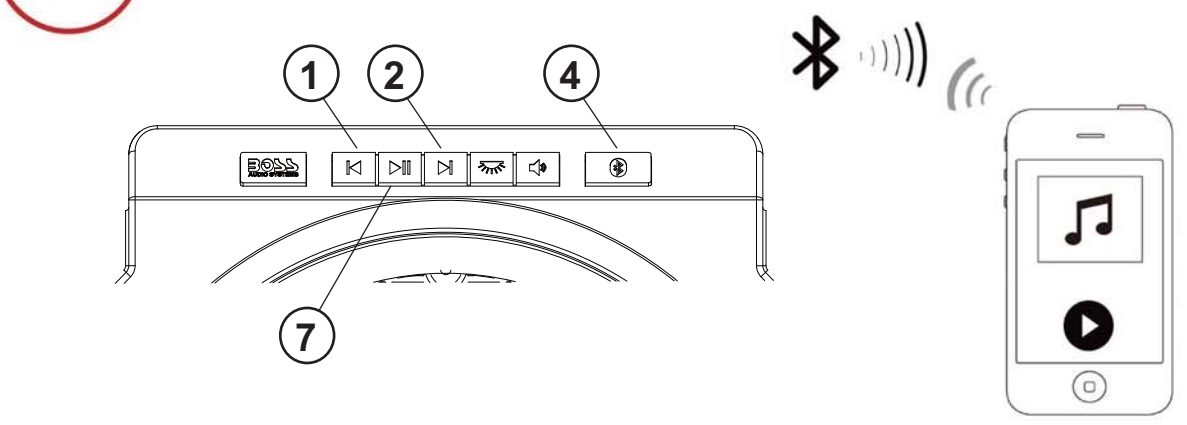
INSTALLATION PRECAUTIONS

WARNING - Always consult a professional installer

- Do not attempt to install or service this product by yourself. Installation or servicing of this product by persons without professional training and experience in electronic equipment and motorized vehicle accessories may be dangerous and could expose you to the risk of electric shock, injury or other hazards
- Refer any repairs to a qualified **BOSS AUDIO SYSTEMS** Service Center
- The **BRRF40A** should be hard wired directly to the main vehicle battery
- When wiring directly to the vehicles battery, be sure to disconnect the battery's negative terminal wire before starting any wiring procedures
- The ground cable length should be as short as possible (See wiring diagram)
- The **BRRF40A** has a weather resistant design, it should not be under any circumstances submerged in, or under water
- Use only the supplied installation parts provided with the **BRRF40A**
- Wash with a mild detergent and lukewarm water using a clean sponge or a soft cloth
- Rinse well with clean water
- "DO NOT!" - Very Important**
 - DON'T clean in hot sun or on very hot days
 - DON'T use abrasive or highly alkaline cleaners on the main body
 - DON'T scrape the main body with razor blades, or other sharp instruments
 - DON'T ever use gasoline, acetone or carbon tetrachloride
 - DON'T ever use a pressure washer aimed at the speakers

CAUTION!! Using other mounting methods may void this warranty

7 STREAMING MUSIC



MULTIFUNCTION CONTROLLER BLUETOOTH OPERATION

- 1) Press the **7** **PLAY/PAUSE** once to start playing music or press the **PLAY** button from your devices touch screen
- 2) To skip songs or advance, press the **2** **NEXT TRACK** button
- 3) To select the previous song, press the **1** **PREVIOUS TRACK** button

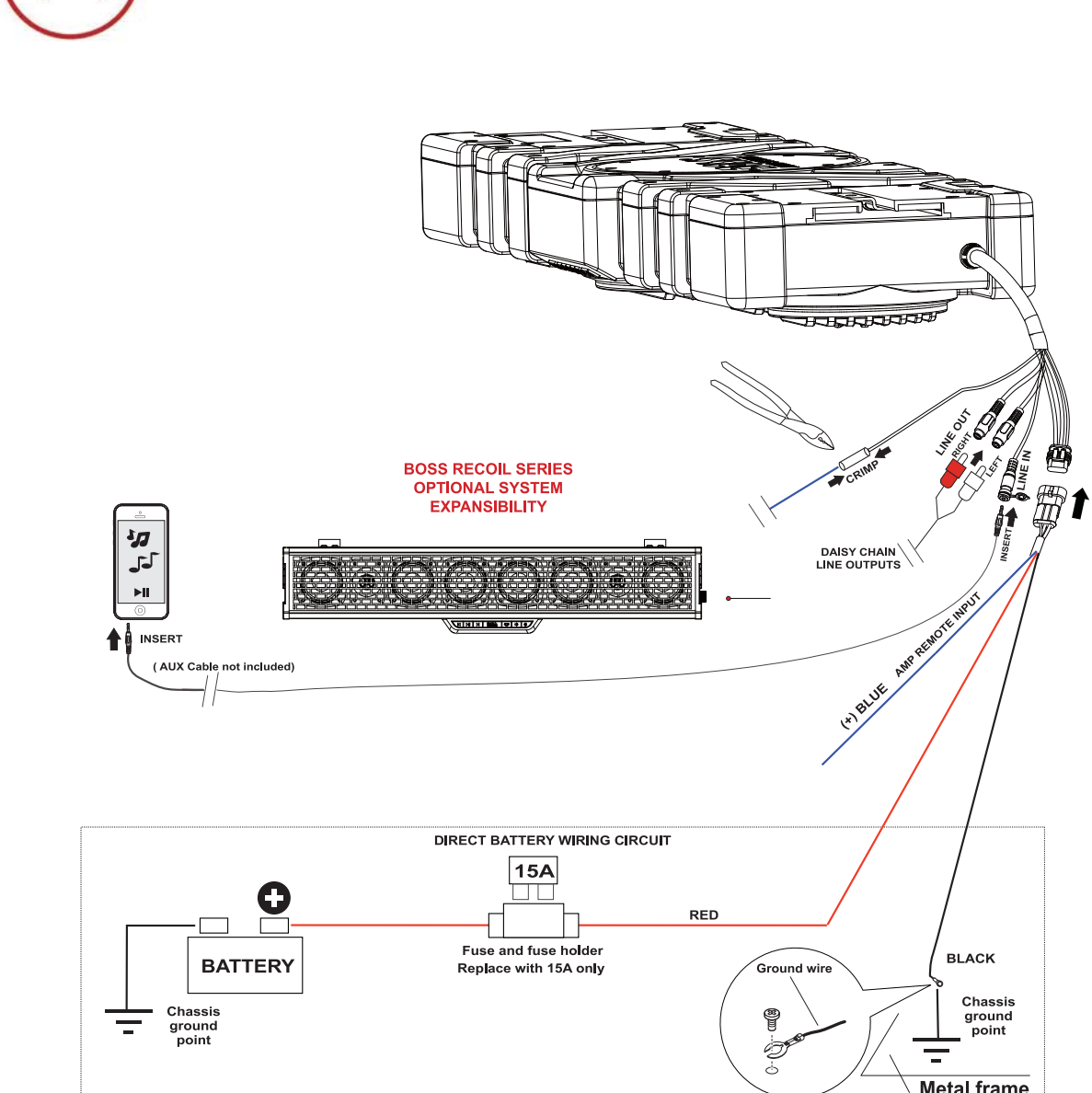
VOLUME CONTROL

- 4) To raise the volume long-press the **2** **NEXT TRACK** button or use your devices controls
- 5) To lower the volume long-press the **1** **PREVIOUS TRACK** button or use your devices controls

NOTE: If **BLUETOOTH** or **AUX** is disconnected for more than 10 minutes the **UNIT** will automatically turn **OFF**, however, when not in use the **ACC** switch should be manually turned **OFF** to keep the vehicles main battery from draining

Tips: Make sure your Bluetooth device volume is set at 100% level before stowing your device

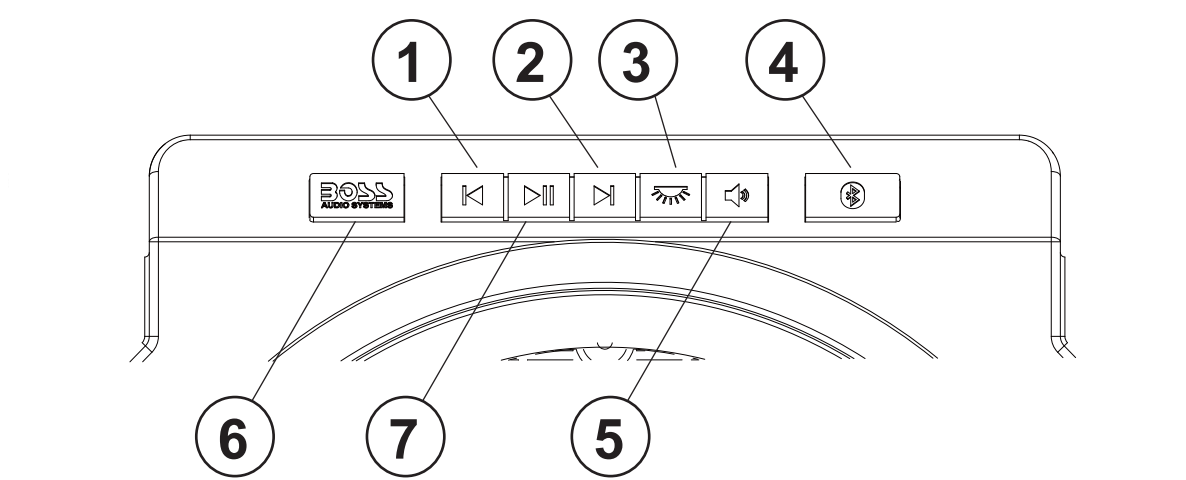
11 WIRE DIAGRAM



DIRECT BATTERY WIRING CIRCUIT

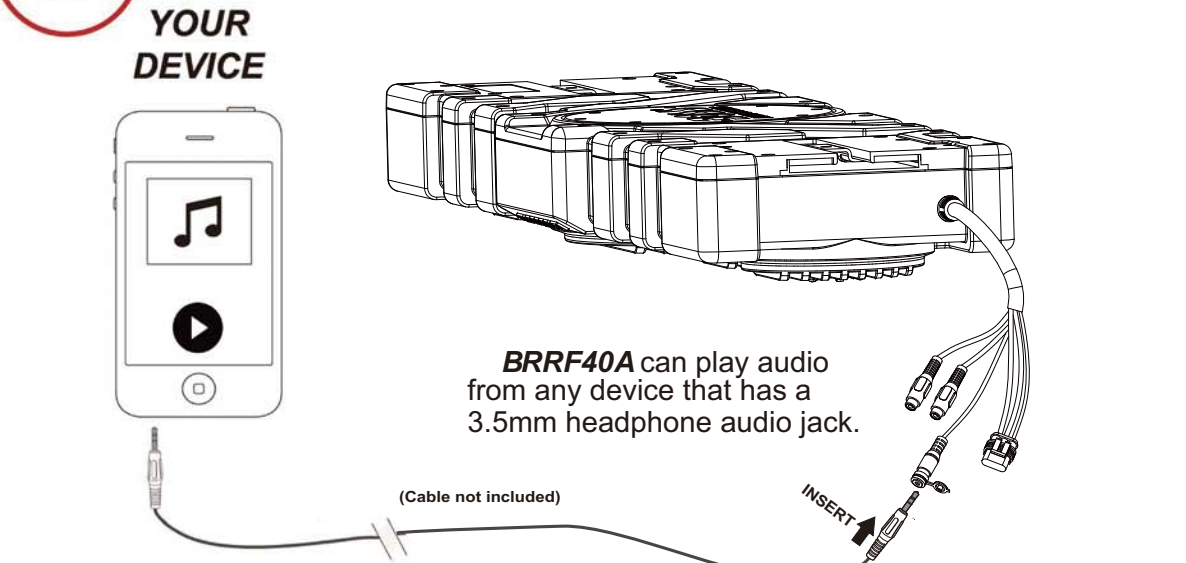
4 GETTING STARTED

GETTING TO KNOW YOUR BRRF40A ONBOARD CONTROL PANEL (OCP)



- OCP - ONBOARD CONTROL PANEL**
- 1 PREVIOUS TRACK** - Short Press; Long press and hold for **VOLUME - Ramp DOWN**
- 2 NEXT TRACK** - Short Press; Long press and hold for **VOLUME - Ramp UP**
- 3 DOME LIGHT ON/OFF** - (Auto 10 minute timer when **BRRF40A** ACC is turned OFF;)
- 4 BLUETOOTH PAIRING INDICATOR LED** - BLUE / AUX RED COLOR
- 5 EQ - EQ1 | EQ2 | EQ3 | FLAT** - EQ1 Default Press and hold for 3 seconds
- 6 POWER ON** - Short Press; RESET- Press and hold for 10 seconds
- 7 PLAY/PAUSE** - AUX MUTE

8 AUX-INPUT



MULTIFUNCTION CONTROLLER AUX-IN OPERATION

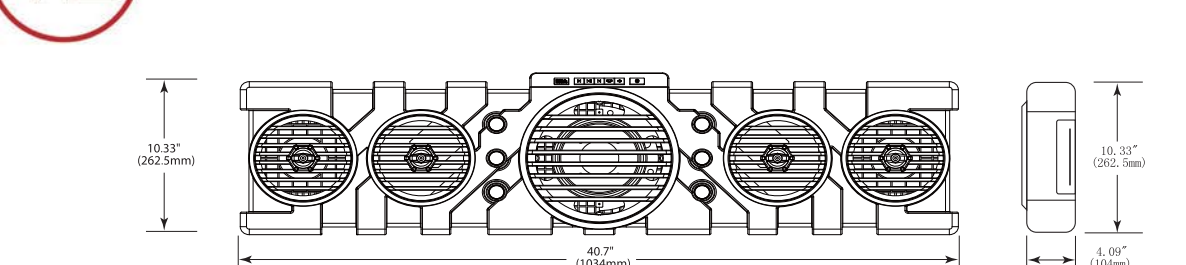
- 1) Power on the **OCP** by short-press the **6** **POWER** button.
- 2) Disconnect any paired **Bluetooth** device by turning off **Bluetooth** in your devices **Settings Menu**
- 3) Connect your 3.5mm **AUX-IN** cable located on right side of the **BRRF40A** to your devices headphone jack
- 4) Route the wire back to **BRRF40A**, secure your device in a safe location

VOLUME CONTROL

- 5) To raise the volume long- press the **2** **NEXT TRACK** button on the OCP
- 6) To lower the volume long- press the **1** **PREVIOUS TRACK** button on the OCP
- 7) To **MUTE** the volume press the **7** **PLAY/PAUSE** button

Tips: Make sure your device headphone volume is set at 100% level before stowing your device

12 SPECIFICATIONS



BLUETOOTH

- Version: 4.1
- A2DP / AVRCP / GATT
- Range: 33ft (10m) Class 2
- 4EQ Presets
- RCA Line Output: 2V RMS

SPEAKERS

- Dimension: 5.25" MID + 8" SUB
- MID Cone Type: PP Carbon
- Tweeter Size: 1" Titanium

AMPLIFIER

- Maximum Output Power: 1000 Watts
- Input Impedance: 10kΩ
- Frequency Response: 45Hz-25kHz

GENERAL

- Operational Power: 14.4VDC (10-16V allowable)
- MAX Current Draw: 12.7A
- Replacement Fuse: 15AATO TYPE
- Cabinet Material: High Impact ABS
- Color: Black
- Weight: 25.3lbs / 11.5kg
- Dimensions Inches WxHxD: 40.70 x 4.09 x 10.33
- Dimensions cm WxHxD: 103.4 x 10.4 x 26.2
- Storage Temperature: 5°F to 175°F / -15°C to 80°C
- Operation Temperature: 32°F to 140°F / 0°C to 60°C

SPECIFICATIONS SUBJECT TO CHANGE WITHOUT NOTICE